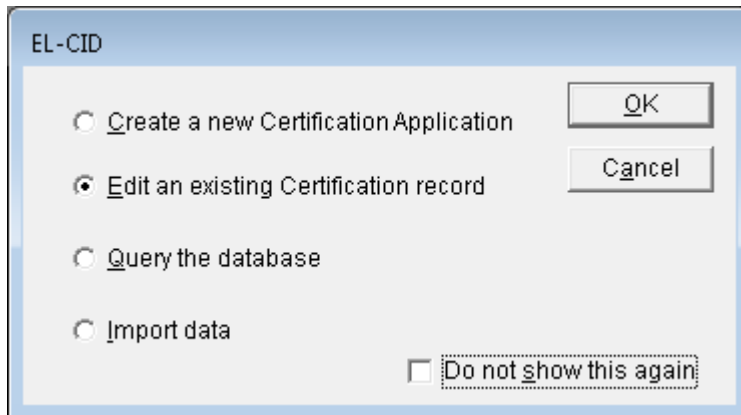


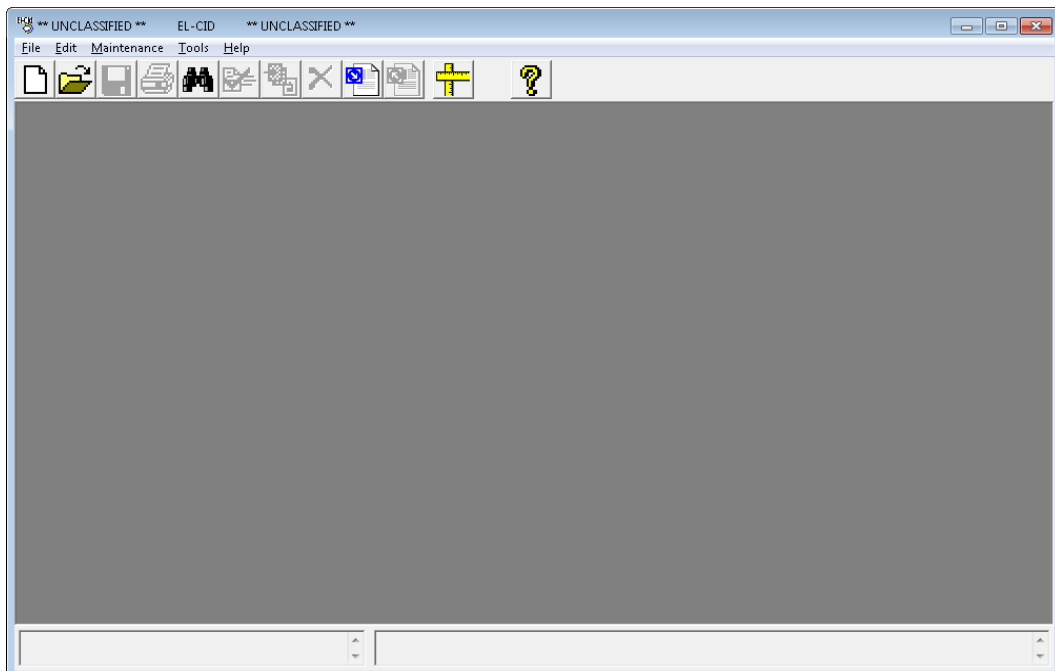
Importing a Backup EL-CID Database


This is an example showing how to import an EL-CID database that had been previously backed up by exporting it into a file **Certification_AR_09102015.cid** in the **C:\ElcidData\User** folder. The following steps will illustrate how to perform this import into EL-CID Version 6.1.

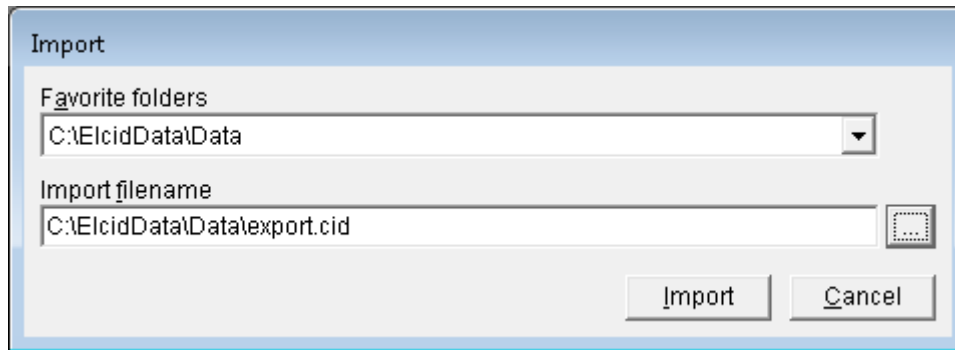
- Step 1.** Start the EL-CID program. If the Startup EL-CID Wizard window is displayed, click **Cancel** to dismiss this screen.



- Step 2.** The main screen appears.



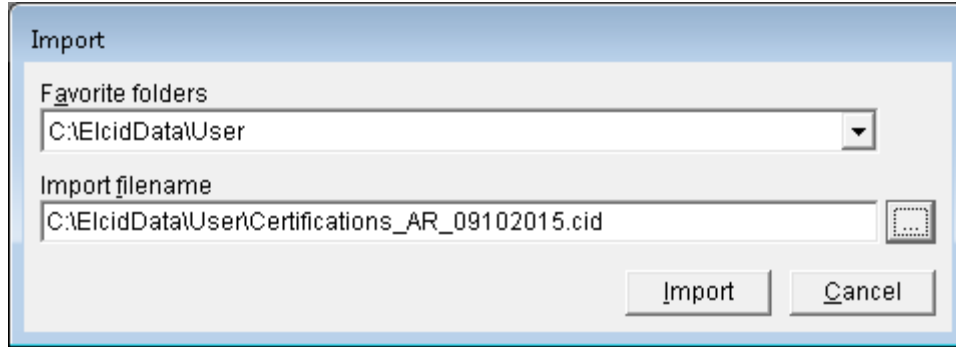
Step 3. Click the **Import** button  on the tool bar. The **Import** window is displayed.



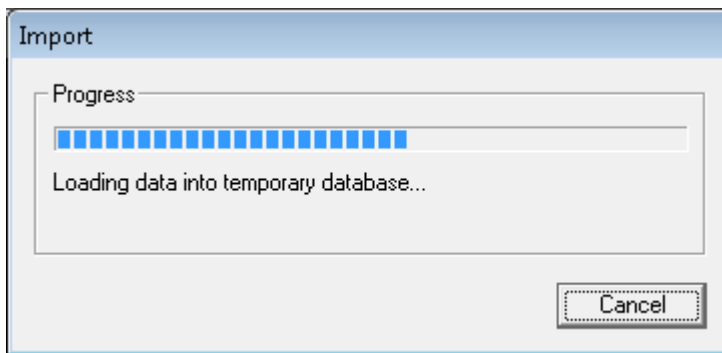
Step 4. Click the **browse** button to select the file to import. Navigate to the **User** folder in the **ElcidData** folder. (For this example, this will be the **C:\ElcidData\User**.) Highlight the filename **Certification_AR_09102015.cid** and then click **Open**.



The **Import** window displays the selection.

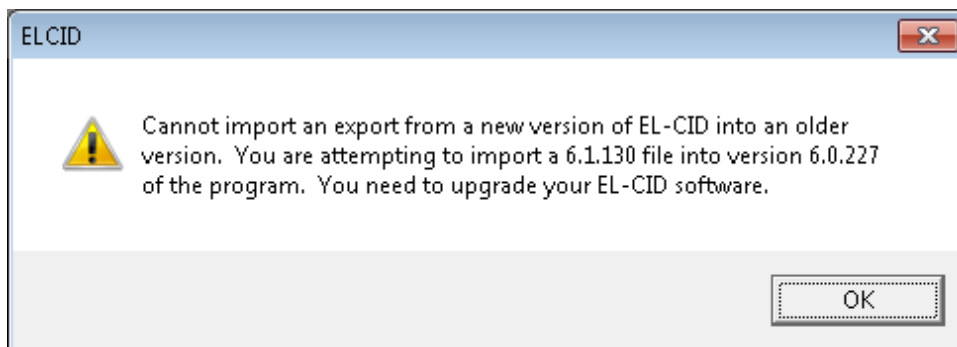


Step 5. Click **Import**. A Progress window is briefly displayed.

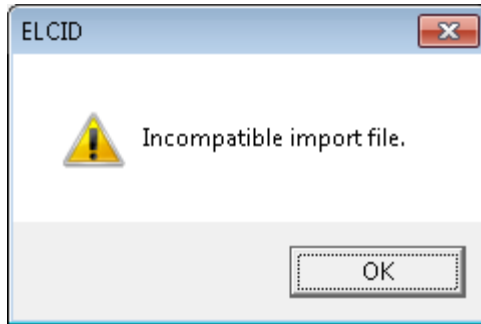


Note: If the database was backed up using EL-CID Version 6.0, a message is displayed "Transforming import file from version 6.0 to 6.1".

If the following message is displayed, a database that was exported from version 6.1 is being imported into version 6.0, which cannot be done. Otherwise, Skip to **Step 6**.

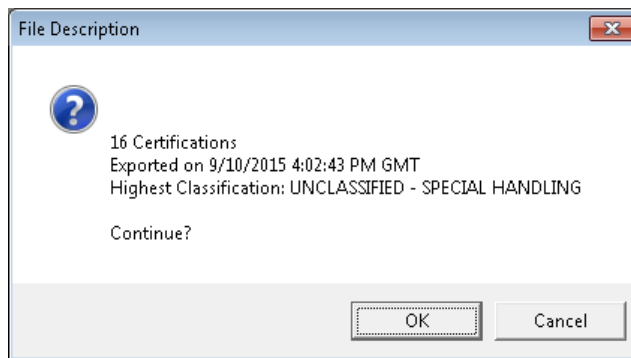


Click **OK**. The following screen appears.

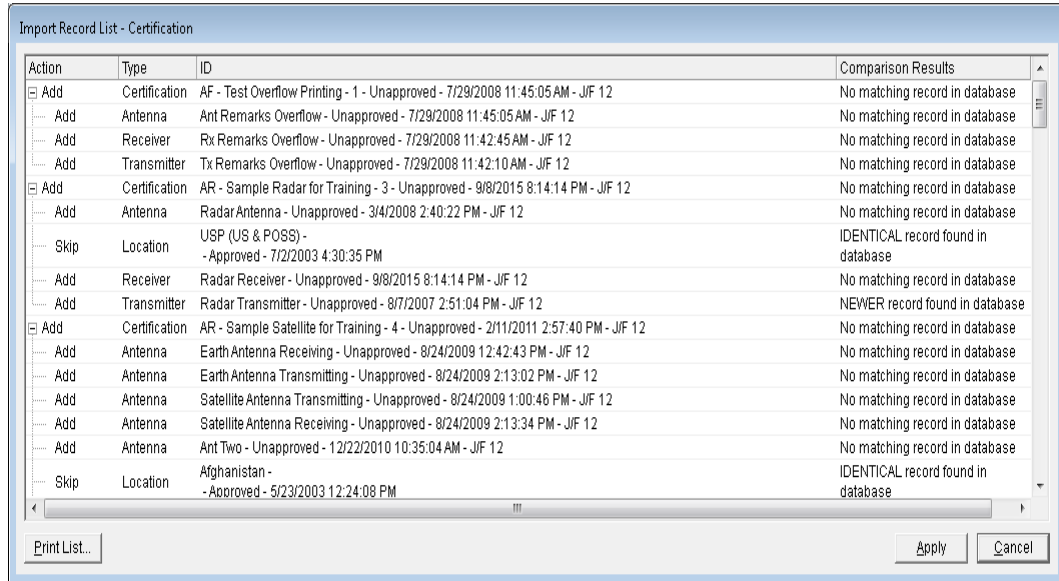


Click **OK** to return to the Import window. Make sure you are running EL-CID Version 6.1.

Step 6. The **File Description** window is displayed. It shows how many Certifications are to be imported and the date they were exported.



Step 7. Click **OK**. The **Import Record List - Certification** window is displayed.

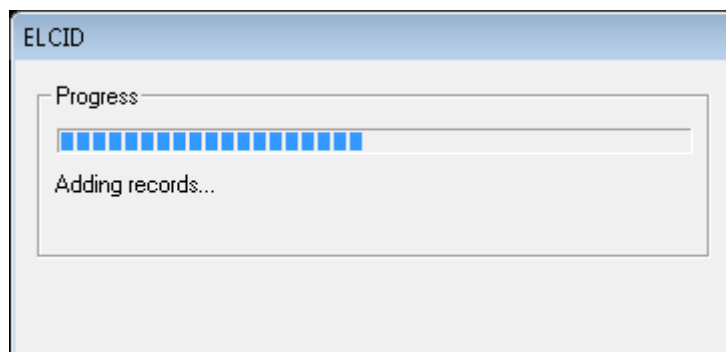


Action	Type	ID	Comparison Results
Add	Certification	AF - Test Overflow Printing - 1 - Unapproved - 7/29/2008 11:45:05 AM - JIF 12	No matching record in database
Add	Antenna	Ant Remarks Overflow - Unapproved - 7/29/2008 11:45:05 AM - JIF 12	No matching record in database
Add	Receiver	Rx Remarks Overflow - Unapproved - 7/29/2008 11:42:45 AM - JIF 12	No matching record in database
Add	Transmitter	Tx Remarks Overflow - Unapproved - 7/29/2008 11:42:10 AM - JIF 12	No matching record in database
Add	Certification	AR - Sample Radar for Training - 3 - Unapproved - 9/8/2015 8:14:14 PM - JIF 12	No matching record in database
Add	Antenna	Radar Antenna - Unapproved - 3/4/2008 2:40:22 PM - JIF 12	No matching record in database
Skip	Location	USP (US & POSS) - Approved - 7/2/2003 4:30:35 PM	IDENTICAL record found in database
Add	Receiver	Radar Receiver - Unapproved - 9/8/2015 8:14:14 PM - JIF 12	No matching record in database
Add	Transmitter	Radar Transmitter - Unapproved - 8/7/2007 2:51:04 PM - JIF 12	NEWER record found in database
Add	Certification	AR - Sample Satellite for Training - 4 - Unapproved - 2/11/2011 2:57:40 PM - JIF 12	No matching record in database
Add	Antenna	Earth Antenna Receiving - Unapproved - 8/24/2009 12:42:43 PM - JIF 12	No matching record in database
Add	Antenna	Earth Antenna Transmitting - Unapproved - 8/24/2009 2:13:02 PM - JIF 12	No matching record in database
Add	Antenna	Satellite Antenna Transmitting - Unapproved - 8/24/2009 1:00:46 PM - JIF 12	No matching record in database
Add	Antenna	Satellite Antenna Receiving - Unapproved - 8/24/2009 2:13:34 PM - JIF 12	No matching record in database
Add	Antenna	Ant Two - Unapproved - 12/22/2010 10:35:04 AM - JIF 12	No matching record in database
Skip	Location	Afghanistan - Approved - 5/23/2003 12:24:08 PM	IDENTICAL record found in database

Notice the locations that are marked **Skip**. This is because identical **Location** records already exist in the database. There is no point in importing such records and creating duplicates. Instead, when the a certification is imported, it will be associated with the existing **Location** records already in the database.

Depending upon the **Comparison Results**, it is possible to override some of these actions. For example, to override adding a Certification record, click on **Add** in the **Action** column in the Certification row. In the list that drops down, select **Skip**. If a record is marked **Skip** because there is a **NEWER** record in the database, you can override it to **Add**. Notice that you cannot override **Skip** if there is an **IDENTICAL** record in the database. Also, you cannot override an equipment or Location from **Add** to **Skip** if the Certification containing the equipment is **Add**, because doing so would modify the Certification record.

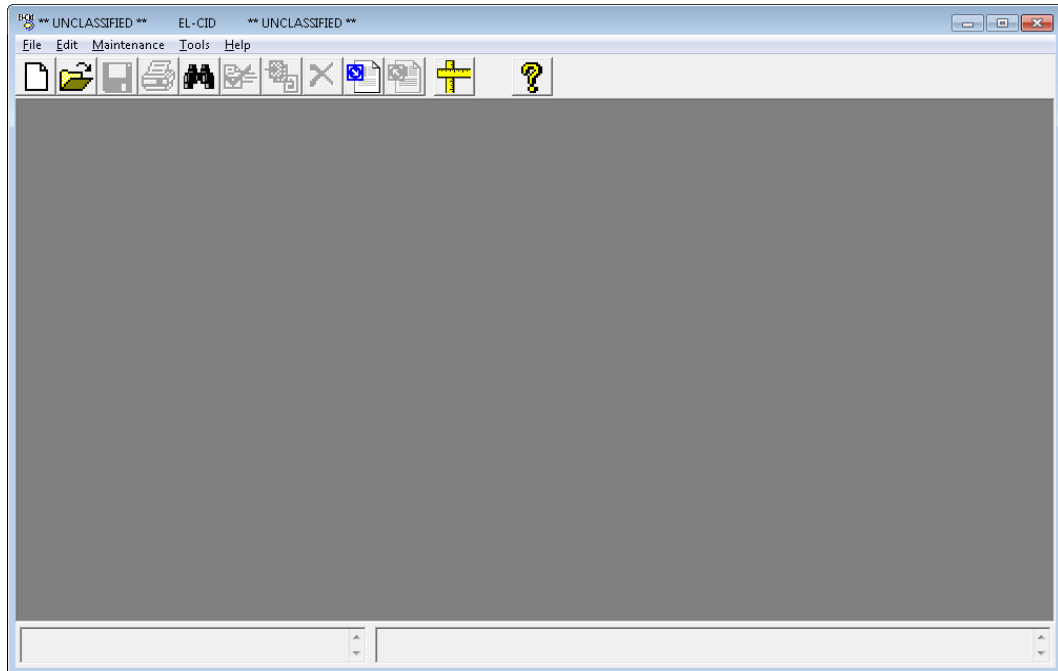
Step 8. Click **Apply**. The **Progress** window is briefly displayed.




The **Import Record List - Certification** window reappears. The rows marked **Add** have changed to **ADDED** and the rows marked **Skip** have changed to **SKIPPED**. At this point, the records have been imported into the database.

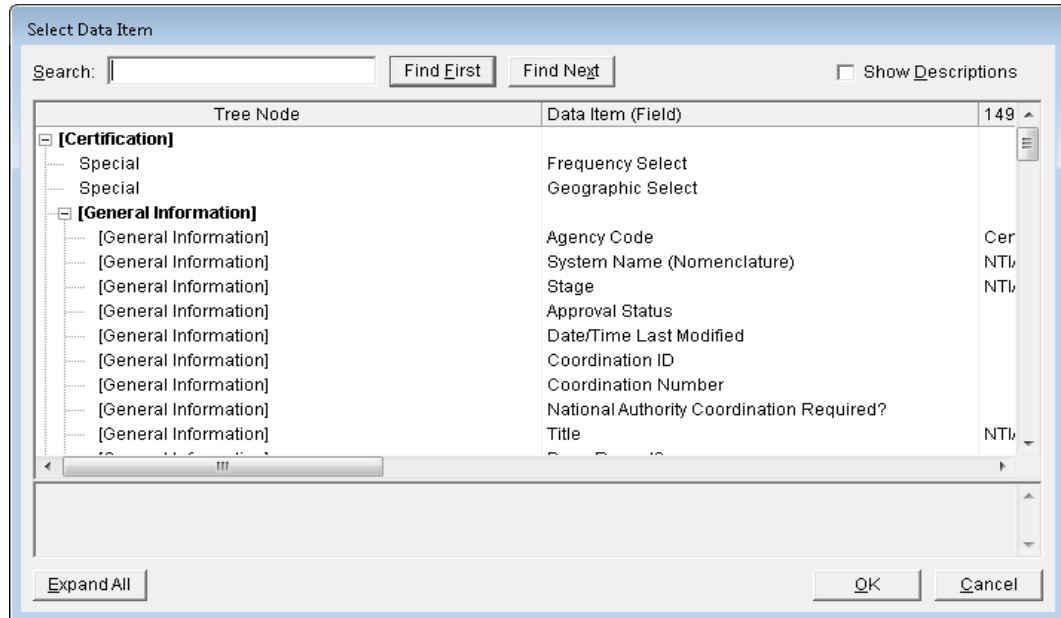
Action	Type	ID	Comparison Results
ADDED	Certification	AF - Test Overflow Printing - 1 - Unapproved - 7/29/2008 11:45:05 AM - JIF 12	No matching record in database
ADDED	Antenna	Ant Remarks Overflow - Unapproved - 7/29/2008 11:45:05 AM - JIF 12	No matching record in database
ADDED	Receiver	Rx Remarks Overflow - Unapproved - 7/29/2008 11:42:45 AM - JIF 12	No matching record in database
ADDED	Transmitter	Tx Remarks Overflow - Unapproved - 7/29/2008 11:42:10 AM - JIF 12	No matching record in database
ADDED	Certification	AR - Sample Radar for Training - 3 - Unapproved - 9/8/2015 8:14:14 PM - JIF 12	No matching record in database
ADDED	Antenna	Radar Antenna - Unapproved - 3/4/2008 2:40:22 PM - JIF 12	No matching record in database
SKIPPED	Location	USP (US & POSS) - - Approved - 7/2/2003 4:30:35 PM	IDENTICAL record found in database
ADDED	Receiver	Radar Receiver - Unapproved - 9/8/2015 8:14:14 PM - JIF 12	No matching record in database
ADDED	Transmitter	Radar Transmitter - Unapproved - 8/7/2007 2:51:04 PM - JIF 12	NEWER record found in database
ADDED	Certification	AR - Sample Satellite for Training - 4 - Unapproved - 2/11/2011 2:57:40 PM - JIF 12	No matching record in database
ADDED	Antenna	Earth Antenna Receiving - Unapproved - 8/24/2009 12:42:43 PM - JIF 12	No matching record in database
ADDED	Antenna	Earth Antenna Transmitting - Unapproved - 8/24/2009 2:13:02 PM - JIF 12	No matching record in database
ADDED	Antenna	Satellite Antenna Transmitting - Unapproved - 8/24/2009 1:00:46 PM - JIF 12	No matching record in database
ADDED	Antenna	Satellite Antenna Receiving - Unapproved - 8/24/2009 2:13:34 PM - JIF 12	No matching record in database
ADDED	Antenna	Ant Two - Unapproved - 12/22/2010 10:35:04 AM - JIF 12	No matching record in database
SKIPPED	Location	Afghanistan - - Approved - 5/23/2003 12:24:08 PM	IDENTICAL record found in database

Step 9. Click **OK** to close the window and return to the main screen.

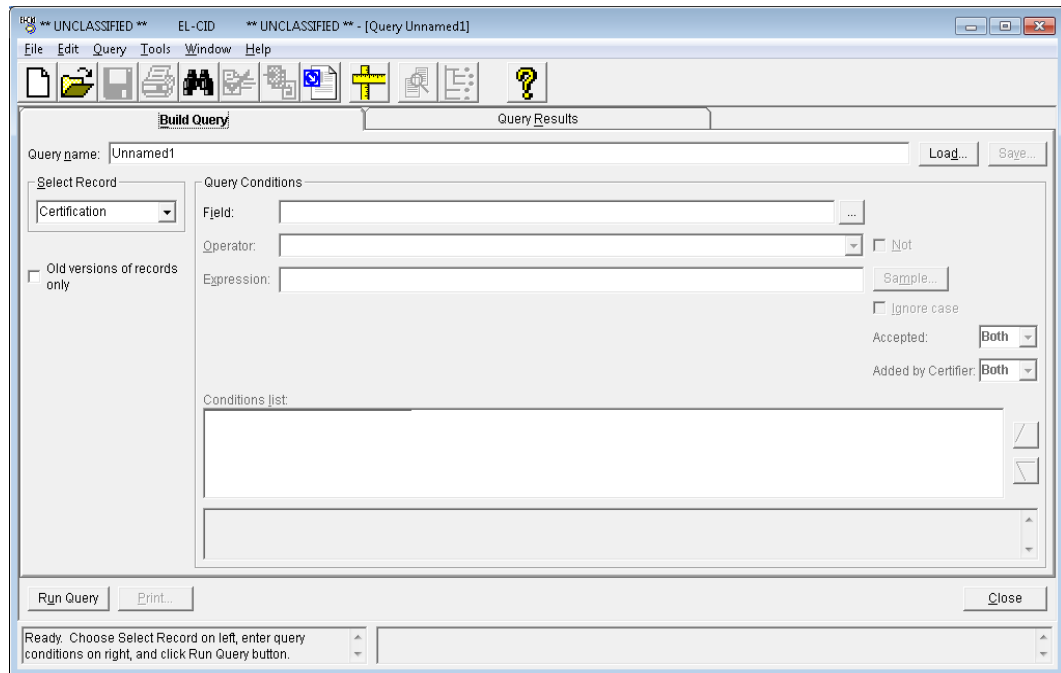


Step 10. The database may now be examined. Click the **New Query** button  on the tool bar.

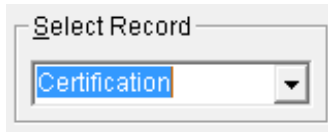
The **Build Query** window appears and (assuming that you have not disabled it in the Preferences) the **Select Data Item** window automatically appears. If the **Select Data Item** window is displayed, click **Cancel**.



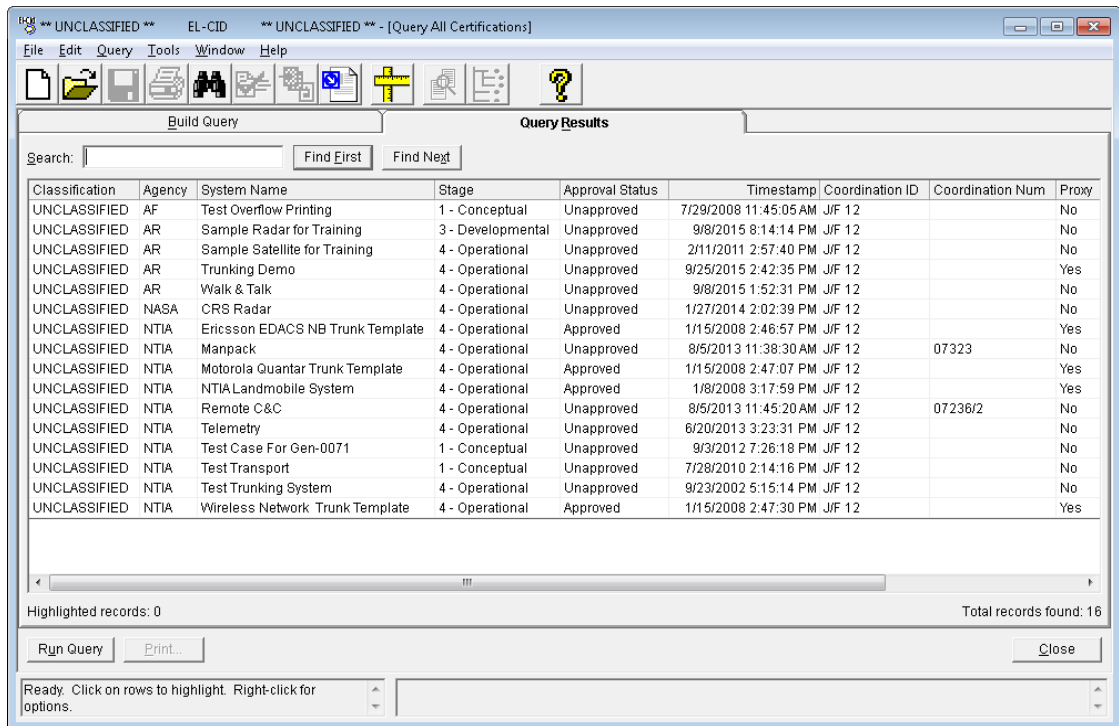
Step 11. The **Build Query** window appears.



Step 12. Select **Certification** using the dropdown list button  for the **Select Record** box.



Step 13. Click the **Run Query** button, or click the **Query Results** tab to execute the query. All Certifications in your Database will be displayed.



Step 14. Click **Close** to close the window and return to the main screen.