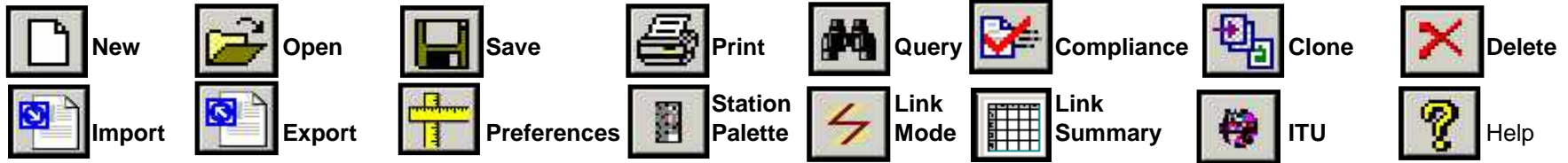




EL-CID Quick Reference

Version 6.1



Tool Bar

- 1. Click to select a Station icon.
- Items you can link to/from are colored.
- 2. Drag icon to the Diagram View.

Station Palette

Land Mobile, Airborne, Fixed, Land, Sea, Transport, Satellite, Radar, Earth, Mobile Earth, Target, Secondary Radar, METAIDS Radiosonde, METAIDS Radar, METAIDS Ground

Linkable Tx Station, Linkable Rx Station, Linkable Tx and Rx, Non-linkable Station

Display available Radio Service/Station Classes

Land Mobile station to Land Mobile station

Land Mobile/ML - Land Mobile
Land Mobile/MLD - Telecommand Land Mobile
Land Mobile/MLP - Portable Land Mobile

UNCLASSIFIED ** EL-CID ** UNCLASSIFIED ** - [Tree View [Certification] NTIA - Manpac...

File Edit Frequency Window Help

Tree View

Data Item	Class	Va...	Units
+ Fixed Frequency?		No	
Lowest Tuned Frequency	U	13...	MHz
Highest Tuned Frequency	U	16...	MHz
Tuning Increment			
# of Frequencies Required for Operation	U		
Minimum Required Frequency Separation	U		MHz

Tree View

- 1. Click a node to display data items
- This item hides/unhides other items depending upon its value
- Classification of data item
- 4. Click another node to save data
- Bold items are required
- Data item help displayed here
- 2. Click anywhere in row to change a data item
- 3. Click to restore original values

- 3. Check to show Radio Services and Station Classes.
- Radio Services and Station Classes available from the selected icon to the icon under the mouse cursor.

Station Palette



EL-CID Quick Reference

Version 6.1

Preferences

Preferred Settings

Default Units | **General** | Fonts and Colors

- Large icons in toolbar
- Compact database on startup
- Open data item selector when creating new query
- Display wizard on startup
- Display release information on startup
- Use mouse to enter point values in curve editor
- Allow drag and drop in Tree View
- Include XML-Schema (export.xsd) in export files
- Warn about possible viruses when viewing attachments

Path to Satellite Registration (ITU): ...

Preferred Settings

Default Units | **General**

Data Item	Units	Significant Digits	Sample
Frequency	MHz	5	0.000012346 MHz
Bandwidth/Selectivity	kHz	5	0.012346 kHz
Frequency Tolerance	kHz	5	0.012346 kHz
Tuning Increment	kHz	5	0.012346 kHz
Data Rate	bps	3	12.3 bps
Pulse Rate	pps	3	12.3 pps
Chip Rate	/sec	3	12.3 /sec
Code Repetition Rate	/sec	3	12.3 /sec
Hop Rate	/sec	3	12.3 /sec
Power	W	3	12.3 W
Power Density	W/Hz	3	12.3 W/Hz

Used For:

Frequency	Frequency
Antenna - Linear	Antenna Upper Frequency Limit
Accepted Mode	Low Frequency of Band or Discrete Frequency

Data Finder

1. Enter a search string here.
2. Click to locate data item containing search string.
3. Click to choose data item.
4. Click to expand or collapse entire tree.

Data Item Finder

Search: Show Descriptions

Tree Node	Data Item (Field)	1494 Page	1494 Block
[Certification]			
[General Information]			
[General Information]	Agency	Certification of Spectrum	Recipient Agency
[General Information]	System Name	NTIA General	1. Application Title, 2. System
[General Information]	Stage	NTIA General	3. Stage of Allocation
[General Information]	Approval Status		
[General Information]	Date/Time Last Modified		
[General Information]	Certification ID		

The code, as specified in Annex G of the NTIA Manual, which identifies the agency responsible for managing the frequency authorization or the certification application.

Full description of highlighted data item appears here.

Screen is resizable.



EL-CID Quick Reference Version 6.1

Data Entry

Edit Box

Model Name and Number U AN/PRC-127A Rx

Pick List

2. Click to select a value from list

1. Click to drop down list of values

Power Type	U	Mean
Power	U	Mean
		Carrier
		Peak Envelope

Database Pick List

Click to list possible values

Manufacturer U RELM Communications ...

Numeric with units

1. Click to select units first

2. Then enter value here

Lowest Tuned Frequency U 5.000 MHz

Emission Designator

1. Enter a valid Emission Designator here, or ...

2. ...click to display Emission Designator screen

Emission Designator U 12KQF3E

Memo Box

1. Type the text here, or ...

2. ... click this button to display a larger text entry screen.

System Description U The AN/PRC-127A ...

Memo Box Expanded

System Description

The AN/PRC-127A is a small, lightweight radio capable of providing two-way ground communications.

OK Cancel

Attachment

1. Click to specify a file name

2. Click to launch application to view file

This button displays the icon of the application associated with the file

Attachment U Minutes113001.doc



EL-CID Quick Reference

Version 6.1

Curve Editor

Set the classification of the entire curve.

If present, click to calculate the curve using a model.

If present, select Measured or Calculated.

Click to delete selected point or add a new point.

RF Fundamental Curve Measured or Calculated?:

Classification:

Freq offset (Fo)	Level
7.5000	-3.00
13.000	-20.0
28.000	-40.0
45.000	60.0

Delete Point Add Point

Freq offset (Fo): kHz **ENTER HALF BANDWIDTHS!**

Level: dB

Scale: kHz Autoscale Log scale

Frequency offset (relative to the peak of the curve) for this point on the curve. Reset Close

UNCLASSIFIED [Certification] NTIA - Remote C&C - 4 - Unapproved - 8/4/2004 10:08:49 AM - J/F 12

The X axis is this many kHz wide.

Increase/decrease X axis scale or automatically size to fit.

Click a row of grid or click on a point to select a point.

Scroll X axis left or right



EL-CID Quick Reference

Version 6.1

Link Information

1. Click to choose Radio Service and Station Class.

2. Click to choose transmitter.

Hover mouse cursor over icon to see Station type

?? indicates Station Class must first be chosen.

3. Click to choose transmitting antenna.

4. Enter transmitter-to-antenna Coupling Loss.

5. Click to choose receiver (generic stations have no receivers).

Check to hide out-of-band Modes

6. Click to choose receiving antenna.

Indicates invalid link.

7. Click to highlight a Mode, then click > to select.

8. For out-of-band Modes, enter a Justification or pick from Policies.

9. Click to save link info.

Link Information Dialog Fields:

- Reverse Link
- From Station: ManPack
- To Station: ManPack
- Radio Service: Land Mobile
- Station Class(es): MLP - Portable Land Mobile
- Select Radio Service / Station Class ...
- Transmitter: Manpack TX
- Transmitter antenna: ManpackAnt
- Coupling Loss: U
- Receiver: [Empty]
- Receiver antenna: [Empty]
- Available Modes table:
- Selected Modes table:
- Justification for out-of-band Modes
- Buttons: Link is Invalid..., View Link..., Apply, Close

Radio Service & Station Class

Hover mouse cursor over icon to see Station type

Select Radio Service and Station Class

From Station: Back Pack Radio

To Station: Back Pack Radio 2

		Radio Service
		Land Mobile
Station Class	ML - Land Mobile	<input type="checkbox"/>
	MLD - Telecommand Land Mobile	<input type="checkbox"/>
	MLP - Portable Land Mobile	<input checked="" type="checkbox"/>

Portable Land Mobile Station: A portable station operating in the land mobile service.

Buttons: OK, Cancel

1. Check Radio Service/Station Classes desired.

2. Click to save.

Hover mouse over choices to display information here.



EL-CID Quick Reference

Version 6.1

View Link

Click and press Ctrl-C to copy grid to clipboard

Click to view opposite link (if enabled)

Click to change sort order

Drag divider to resize columns

Hover mouse cursor over icon to see Station type

Station name

Click and drag to change order of columns

Column order is remembered between viewings. Use Preferences to reset.

Radio Service	Transmitter	Power (W)	Frequency (MHz)	Em. Des.	EIRP (W)	TX Antenna	RX Antenna	Receiver	In-band?	Justification for Out-of-band	Cur
Land Mobile	Manpack TX	3.00 Mean	138.0000 - 144.0000	11K0F3E	3.00	Manpack Ant					PRI
			148.0000 - 149.9000								PRI
			150.0500 - 150.8000								PRI

View Link Summary

Check to reduce number of columns displayed.

Click column header to change sort order.

Drag divider between columns to resize columns

Drag column headers to re-order columns

Click on a grid row, then click this button to display the corresponding band in the FAT

The window is resizable

Hide receivers

Hide modes

Hide locations

Hide stations and equipment

TX Station	Radio Service	Stn. Classes	Transmitter	Power (W)	Frequency (MHz)	Em. Des.	TX Ant. Gain
ManPack	Land Mobile	MLP	Manpack TX	3.00 Mean	138.0000 - 144.0000	11K0F3E	0.000
					148.0000 - 149.9000		
					150.0500 - 150.8000		

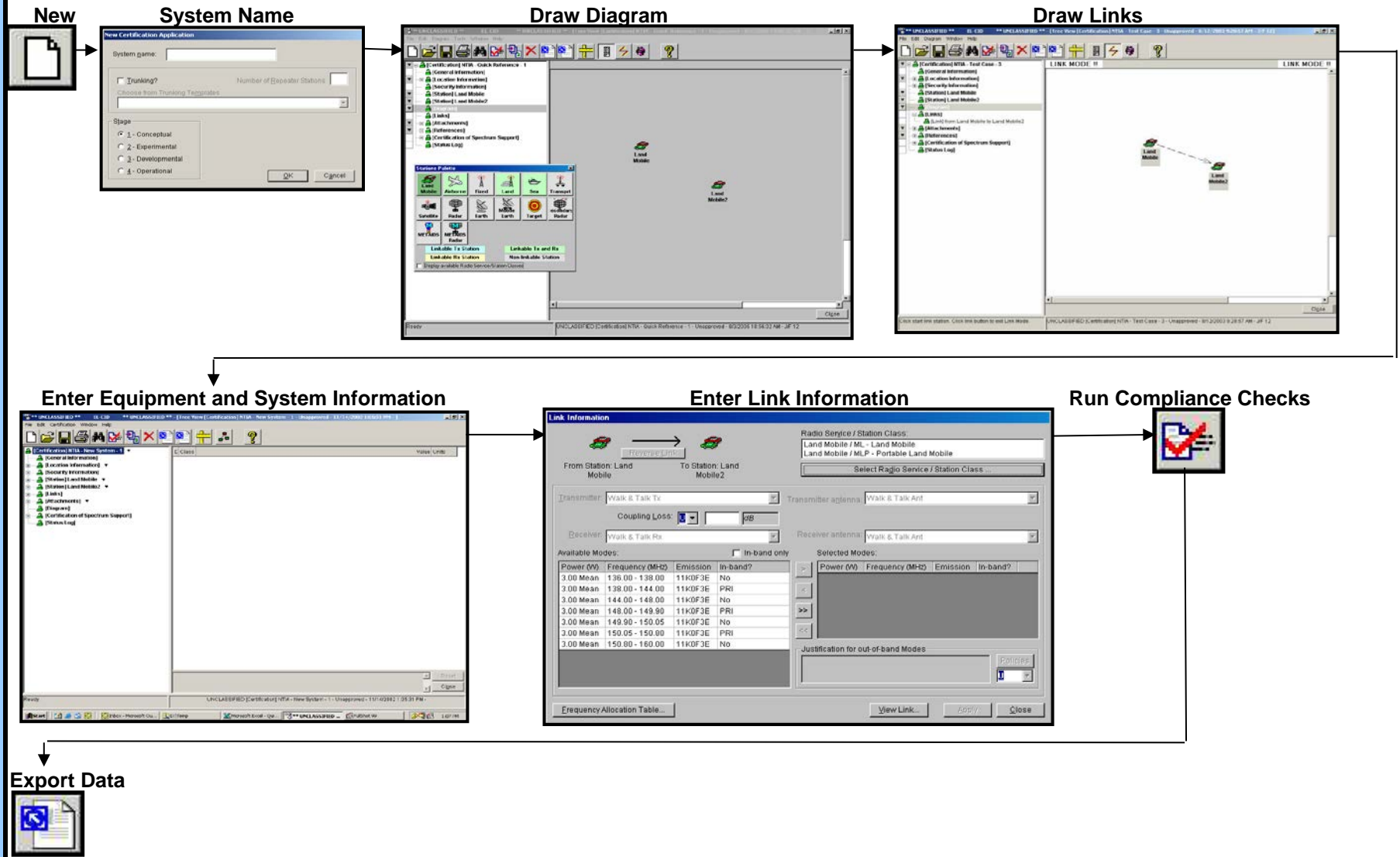
Radiation Hazard... Frequency Allocation Table... Selected modes Accepted modes OK

For more detailed information: Consult the EL-CID Help File



EL-CID Quick Reference Version 6.1

Creating a New Certification



For more detailed information: Consult the EL-CID Help File



EL-CID Quick Reference

Version 6.1

Keyboard Shortcuts

Keyboard Shortcuts

The following tips will assist users who prefer to use the keyboard rather than the mouse.

Tab Key

In general, the Tab key should be used to move from one item to the next; not the Enter key.

F10

Press the F10 key for quick access to the main menu.

Grids

Throughout EL-CID a number of screens display data in a grid. To navigate up/down or left/right in these grids, use the arrow keys. One exception is the Tree View. On this screen, hold down the Shift key while using the arrow keys to navigate in the grid, or use the Tab key. At bottom of grid, press the Tab key to move off the grid elsewhere on the screen.

Pick Lists

When the cursor is on a pick list, press the down or up arrow keys to scroll through the pick list. Hold down the Alt key and press the down arrow key to drop the pick list down. In many cases, you can also select items in the pick list by typing the starting characters.

Tree View

To navigate within the data item grid, hold down the Shift key while pressing the arrow keys.

When the cursor is on a node of the tree, press the right arrow key to expand the node. Use the left arrow key to collapse the node. Use the up and down arrow keys to scroll through the tree.

Frequencies

When entering frequencies, you can use the standard MCEB format as a shortcut to entering the value and units. For example, entering K50, will enter a value of 50 and select kilohertz, regardless of the current units selected. Use a T for terahertz, G for gigahertz, M for megahertz, K for kilohertz, or H for hertz. The units may precede or follow the number. For example, K50 and 50K are both acceptable. You can also enter frequencies using scientific notation. For example 12000 would be entered as 12E3.

Diagram View

The Diagram View cannot be operated without a mouse.

Copying Data

Copying Grid Data to the Windows Clipboard

1. If focus is not currently on the grid, click somewhere in the grid to move focus to it.
2. Hold down the Ctrl key and press the C key. The Copy Grid To Clipboard Options screen appears.
3. If you want to copy only the highlighted cells of the grid to the clipboard, select the Highlighted cells only radio button . To copy the entire grid to the clipboard, select the Entire grid radio button. In the latter case, if you want to include the column headings of the grid, check the Include column headings check box.
4. Click OK or click Cancel to abandon copying.
5. To paste the clipboard contents into another application, switch to the other application, then hold down the Ctrl key and press the V key.

Map

About the Map

Consult the help file for detailed information

For more detailed information: Consult the EL-CID Help File